



421 W. RIVERSIDE
SUITE 860
SPOKANE, WA 99201

ZBAARCHITECTURE.COM
t. 509.456.8236

ADDENDUM NO. 04

March 29, 2021

PACIFIC PLACE RENOVATION
South Bend, Washington

The following addendum items shall become part of the Contract Documents for the above referenced project.

PROJECT MANUAL

Item No. 1: Section 08700 – HARDWARE

HW-2 (Building Entrance to Corridor)
(Door #127B)

- 1 ea Surface Closer/Power operator for door assist
- 1 ea Electric Strike for FOB activation
- 1 ea ADA threshold

All other hardware is existing, to remain.

Item No. 2: Section 15000 – MECHANICAL

2.14 PLUMBING FIXTURES

Counter-Mount Lavatory: Caitlin L1290-4 with Flagstone Model 47711 L single lever faucet with pop-up drain and 1.0 gallon per minute aerator/restrictor, with p-trap, Speedway supplies with stops, and single lever faucet with pop-up drain and 1.0 gallon per minute aerator/restrictor equal AM Conservation Part No. 3010.12, or equal.

DRAWINGS

Item No. 3: Modify SHEET A401 with the one attached (changes are clouded).

Item No. 4: Modify SHEET A601 with the one attached (changes are clouded).

****END OF ADDENDUM****

MAX (FT) PIPE RUNS FROM HOT WATER SOURCE

TYPE	3/8"	1/2"	3/4"	1"
K COPPER	75	45	22	12
L COPPER	60	40	20	12
M COPPER	60	40	18	11
CPVC	N/A	50	24	15
PEX	45	50	26	16

EFFICIENT PLUMBING NOTES

- TO MINIMIZE HOT WATER LOSS, THE HOT WATER DELIVERY SYSTEM SHALL STORE NO MORE THAN 0.5 GALLONS OF WATER IN ANY PIPING/MANIFOLD BETWEEN THE HOT WATER SOURCE & ANY HOT WATER FIXTURE.
- HOT WATER TANKS MUST HAVE HEAT TRAPS INSTALLED ON HOT & COLD LINES & 1" INSULATION ON THE FIRST 5' OR FIRST PENETRATION FOR HOT & COLD LINES.
- RECIRCULATION SYSTEMS MUST HAVE BOTH TEMPERATURE & DEMAND CONTROLS. RECIRC LOOP MUST BE FULLY INSULATED WITH FOAM INSULATION OF AT LEAST EQUAL THICKNESS TO THE NOMINAL DIAMETER OF THE PIPE, BUT NO MORE THAN 2" PIPING RUNNING FROM THE HOT WATER SOURCE

KEYED NOTES

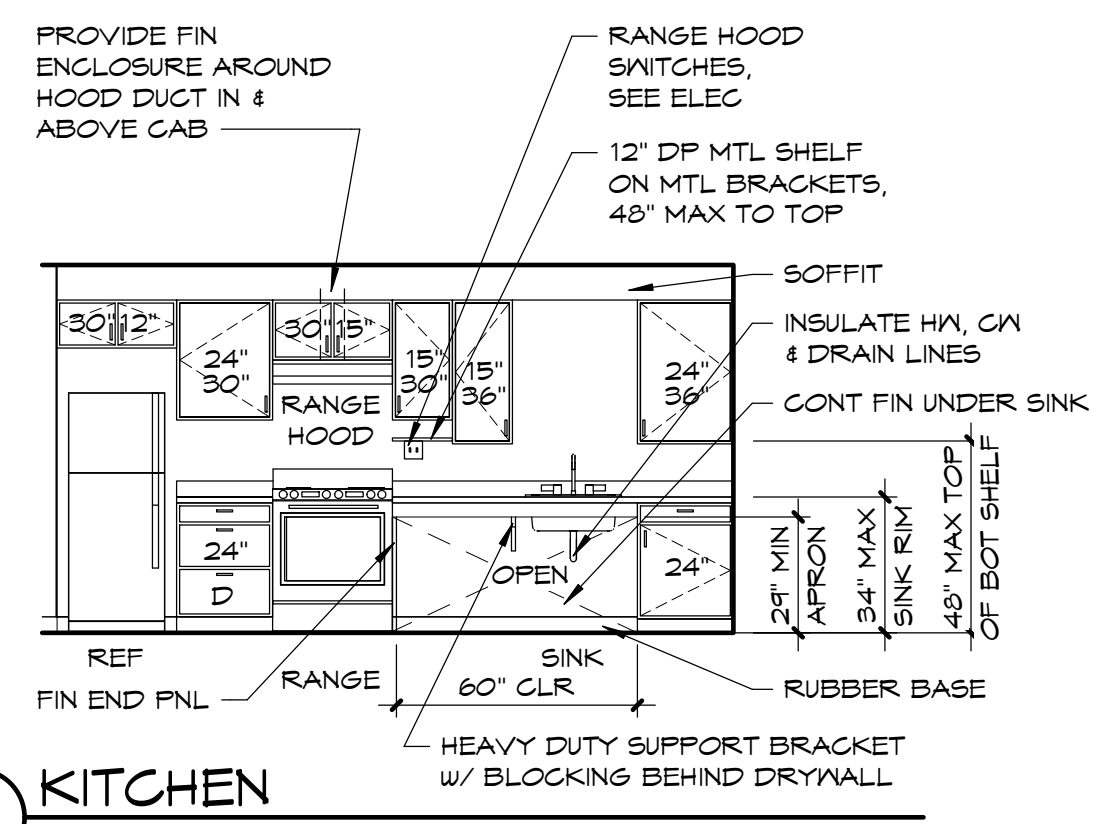
- NEW FLOOR FINISHES, SEE FINISH LEGEND
- EXISTING FLOORING TO REMAIN
- NEW COUNTERTOP & CABINETS
- NEW SINK/LAV & FAUCET
- NEW WALL-HUNG LAV
- INSULATE HM, CM, & DRAIN LINES
- NEW WATER CLOSET
- REPLACE TUB W/ SHWR & SURROUND, SEE UNIT MATRIX
- NEW 24" TOWEL BAR
- NEW TOWEL RING
- NEW GRAB BARS, SIZE PER ELEV
- NEW TOILET PAPER DISPENSER
- NEW LIGHT FIXTURE, SEE INTERIOR ELEVATIONS & ELECTRICAL PLANS
- NEW MIRROR, 24"x36", 40" MAX AFF TO BOT OF REFLECTIVE SURFACE
- BLIND CORNER CABINET
- NEW SHOWER ROD
- INSTALL NEW RANGE
- NEW RANGE HOOD
- CONCEAL RANGE HOOD DUCT IN CABINET, EXTEND GYP BD TO CEILING TO CONCEAL DUCTING ABOVE CABINETS
- NEW REFRIGERATOR
- NEW DOOR, SIZE PER DOOR SCHEDULE
- NEW DOOR FRAME
- NEW WATER HEATER
- REPLACE EXISTING ELECTRIC BASEBOARD HEATER WITH COVE HEATER
- NEW WALL, 2x4 STUDS AT 16" OC W/ GYP BD EA SIDE, TYP
- PROVIDE SECOND DOOR VIEWER AT ACCESSIBLE UNITS, SEE 4/A601
- NEW BASE, TYP SEE FINISH LEGEND
- NEW ADJUSTABLE SHOWER HEAD W/ 24" SLIDE BAR
- INFILL NEW WALL, MATCH EXIST FRAMING & GYP BD
- NEW OFFICE SIGN, SEE 3/A512 & 6/A511
- WATER HEATER, SEE UNIT MATRIX
- NEW 12" DEEP METAL SHELF ON METAL BRACKETS, 48" MAX TO TOP
- NEW WINDOW OR RELIGHT, SIZE PER PLAN
- NEW SOAP DISPENSER
- NEW SURFACE MOUNT PAPER TOWEL DISPENSER
- NEW TUB/SHWR SEAT
- NEW RANGE HOOD FAN SWITCH & RANGE HOOD LIGHT SWITCH
- FINISHED END PANEL, TYP
- PROVIDE 2x BLOCKING BETWEEN STUDS
- NEW WINDOW TREATMENT
- NEW ROBE HOOK, 48" MAX TO TOP
- (5) NEW SHELVES
- REINSTALL ROD & SHELF, SEE 4/A511
- NEW SIGN, SEE 1/A512
- RELOCATE INTERCOM
- NEW RANGE HOOD
- NEW ORANGE PEEL CEILING TEXTURE IN ENTIRE ROOM
- EXISTING POPCORN CEILING TO REMAIN
- NEW DBL 2x6 HEADER
- MAINTAIN EXISTING BEAM, WRAP W/ 5/8" TYPE X GYPSUM BOARD ON ALL SIDES IF EXPOSED DURING CONSTRUCTION
- NEW ELECTRICAL PANEL
- SALVAGED DOOR AND HARDWARE IN NEW FRAME - ADDITIONAL HARDWARE PER SCHEDULE

NOTES

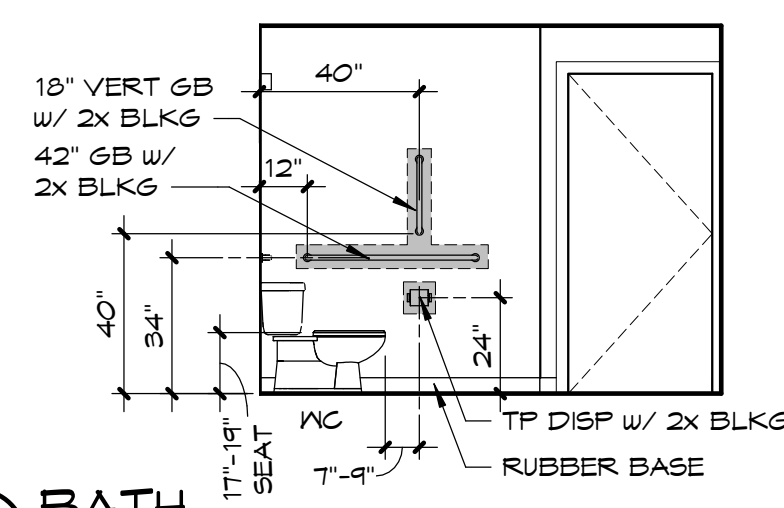
- CLOSET FINISHES SHALL BE THE SAME AS ADJACENT ROOM.
- AT INTERIOR ELEVATIONS: SF = SINK FRONT, SB = SINK BASE, D = DRAWER, T = TRAY
- PROVIDE FINISHED END PANELS ON ALL CABINETS AND COUNTERTOPS THAT DO NOT ABUT A WALL.
- VERIFY LOCATION OF EXHAUST VENTS AT EXTERIOR WALLS AND LOCATE ALL OPERABLE WINDOW SASHES 3'-0" MIN FROM EXHAUST OUTLETS.
- NO PIPING, DUCTS, WASHER BOXES, OR ITEMS OTHER THAN APPROVED WIRING DEVICES SHALL BE INSTALLED IN PARTY WALLS.
- ALL WATER PIPING IS TO RUN IN INTERIOR WALLS AND/OR JOIST SPACE BETWEEN FLOORS. NO PIPING SHALL BE RUN IN EXTERIOR WALLS AND/OR ATTIC SPACE.
- AT CLOSETS: R&S = ROD AND SHELF, SEE 4/A511
- CONTRACTOR TO VERIFY ALL WINDOW AND DOOR SIZES PRIOR TO INSTALLATION
- ITEMS TO REMAIN IN UNIT MATRIX ON A601 SHALL BE PROTECTED
- PAINT ALL INTERIOR WALLS & CEILING AT ACCESSIBLE UNITS; PAINT WALLS/CEILING WHERE WORK IS PERFORMED AT TYPICAL UNITS
- REPAIR, PATCH, & PAINT CEILINGS WHERE WORK IS PERFORMED. MATCH EXISTING CEILING TEXTURE AND PAINT ENTIRE CEILING IN ROOM WITH TEXTURE WORK, UNLESS OTHERWISE NOTED.
- SEE UNIT MATRIX ON A601 FOR WORK IN UNITS ON A UNIT-BY-UNIT BASIS.
- SEE A601 FOR ROOM FINISH AND DOOR SCHEDULES
- ALL SECOND FLOOR REPLACEMENT WINDOWS WITH AN OPENING BELOW 36" ABOVE THE FINISHED FLOOR SHALL HAVE A WINDOW OPENING CONTROL DEVICE COMPLYING WITH ASTM F2090 AND ALLOWING FOR EMERGENCY EGRESS
- ALL OPERABLE WINDOWS IN COMMON AREAS AND ACCESSIBLE UNITS SHALL BE ACCESSIBLE. OPERABLE WINDOW HANDLES & LATCHES SHALL BE LEVER-STYLE & 48" MAX TO TOP OF DEVICE. LATCHES SHALL ACTIVATE WITH 5 LBF OF LESS.

DEMO NOTES

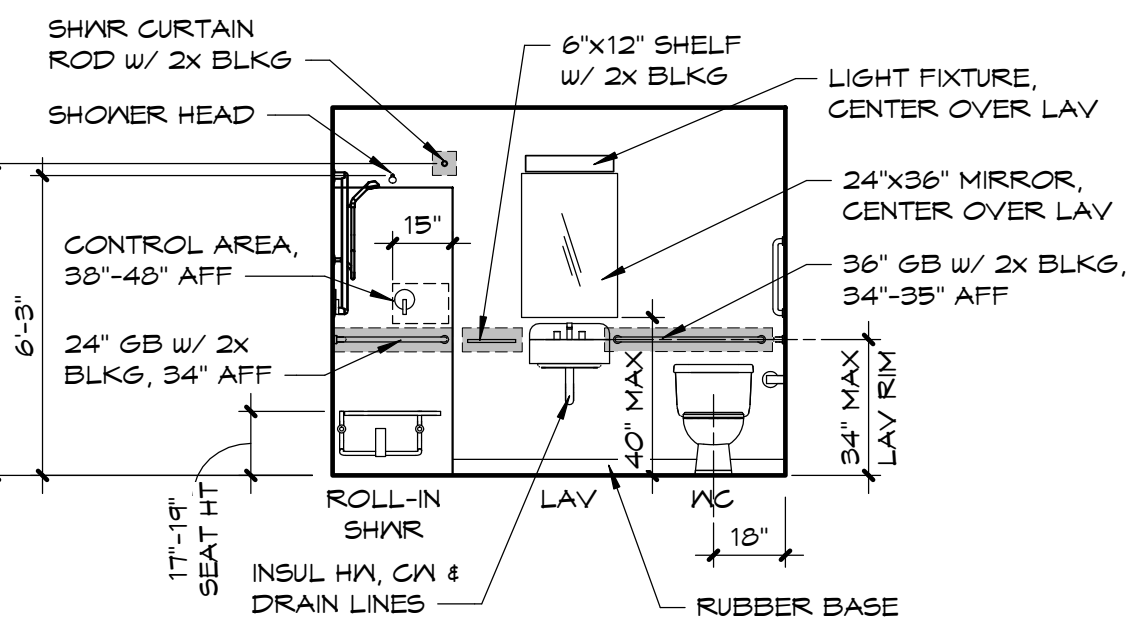
- REMOVE FLOOR FINISHES
- REMOVE CABINETS & COUNTERTOP
- REMOVE SINK/LAV
- REMOVE WATER HEATER
- REMOVE RANGE & RANGE HOOD
- REMOVE REFRIGERATOR
- REMOVE ALL BATH ACCESSORIES (TOWEL BARS, SHOWER ROD, TP DISP, ETC.)
- REMOVE TUB/SHOWER, SEE UNIT MATRIX
- REMOVE WINDOW
- REMOVE HEATER
- REMOVE DOOR & DOOR HARDWARE, FRAME TO REMAIN
- REMOVE WALL
- REMOVE DOOR, HARDWARE, & FRAME - SALVAGE WHERE REQUIRED
- REMOVE BASEBOARD HEATERS
- REMOVE ALL GRAB BARS
- REMOVE ROD & SHELF, STORE FOR REINSTALLATION
- ELEC PANEL TO REMAIN
- REMOVE EXIST AC UNIT
- REMOVE WATER CLOSET
- REMOVE DISHWASHER
- REMOVE SIGN
- RELOCATE INTERCOM
- REMOVE RANGE HOOD
- REMOVE VANITY, SINK AND FAUCET



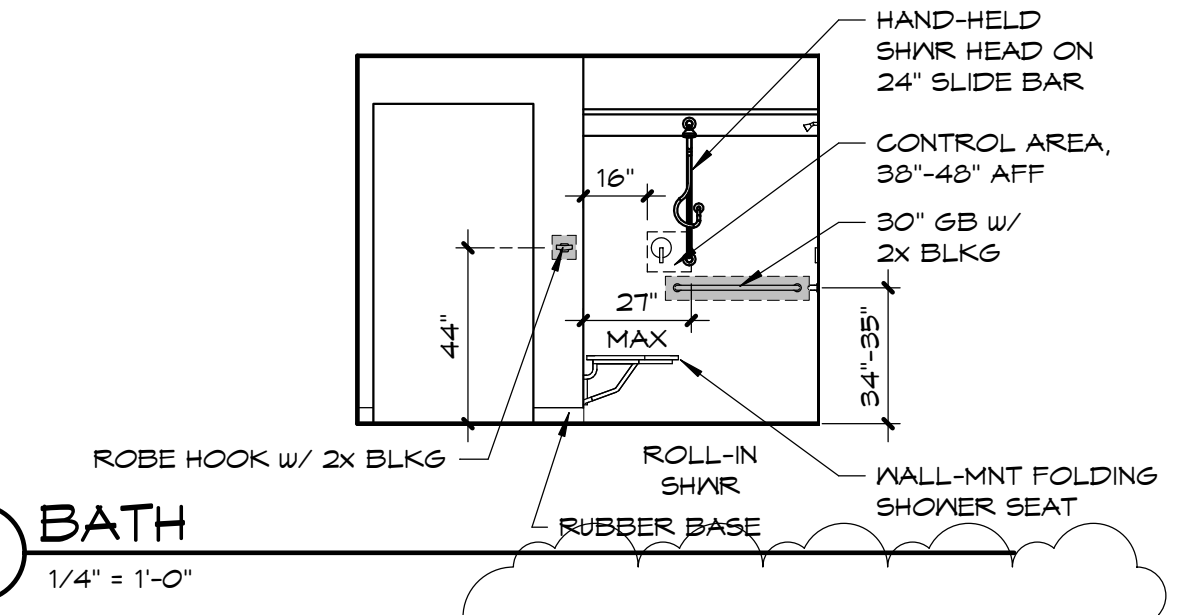
1 KITCHEN
1/4" = 1'-0"



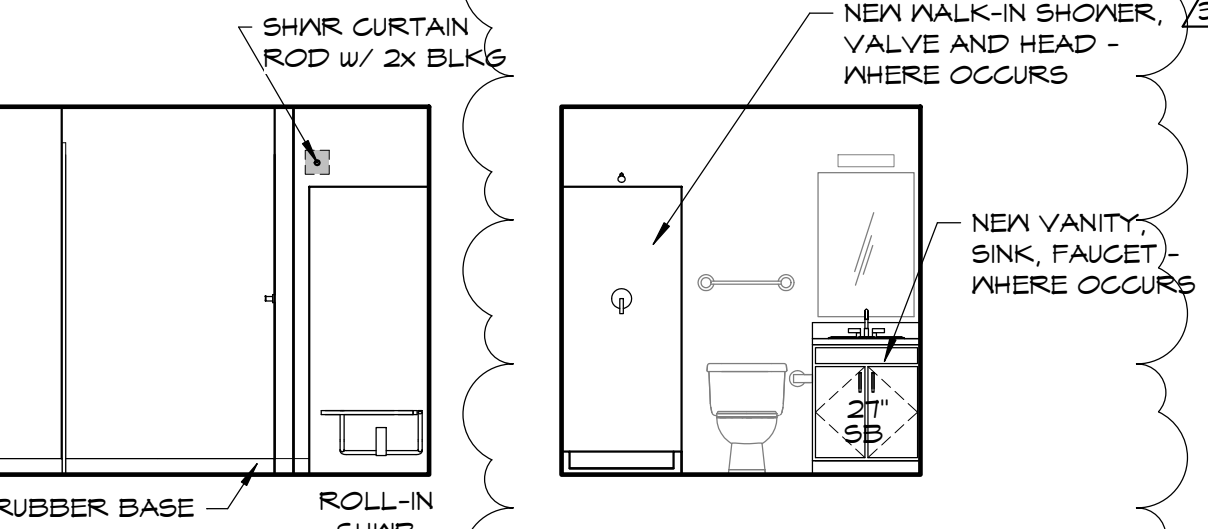
2 BATH
1/4" = 1'-0"



3 BATH
1/4" = 1'-0"

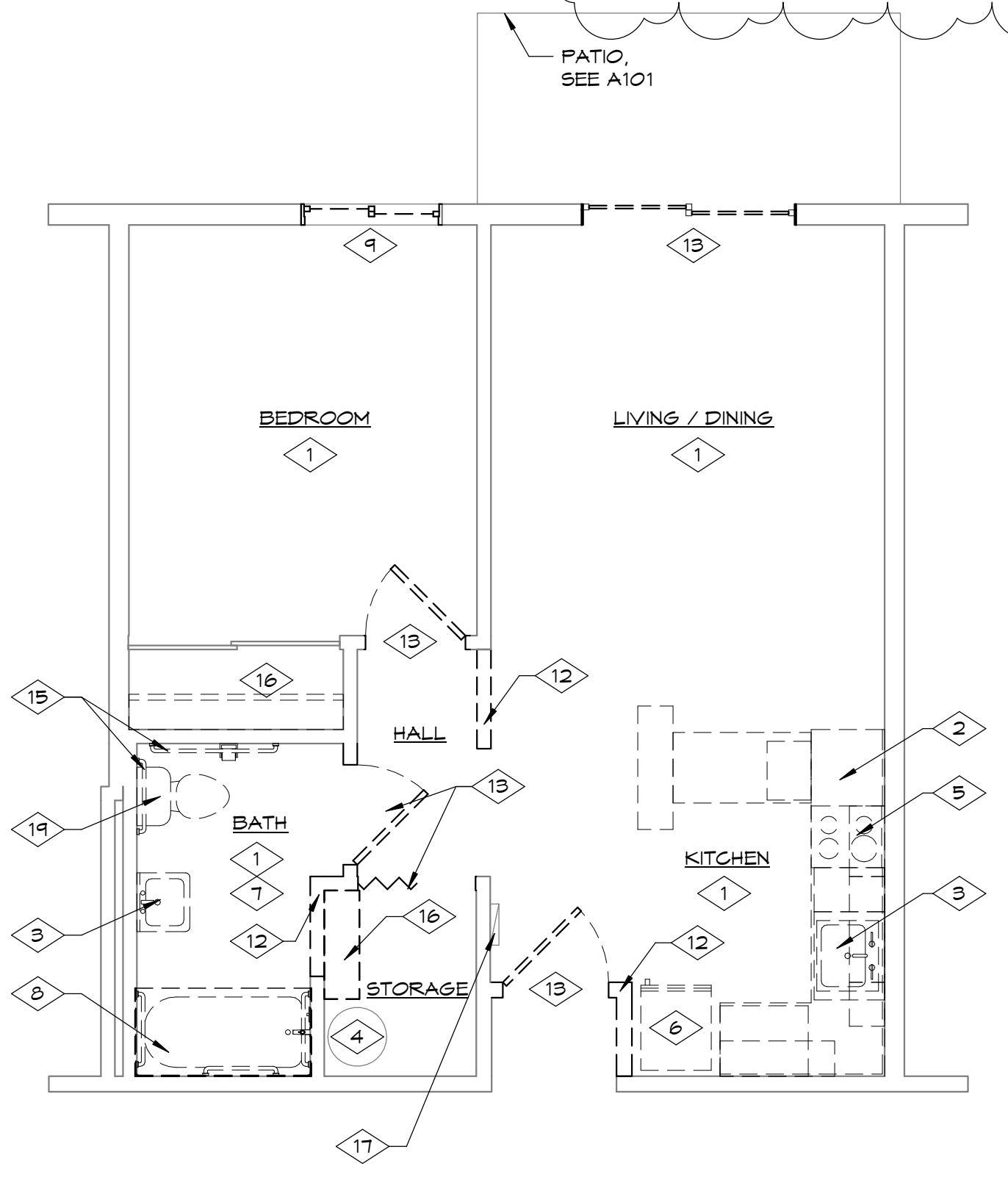


4 BATH
1/4" = 1'-0"

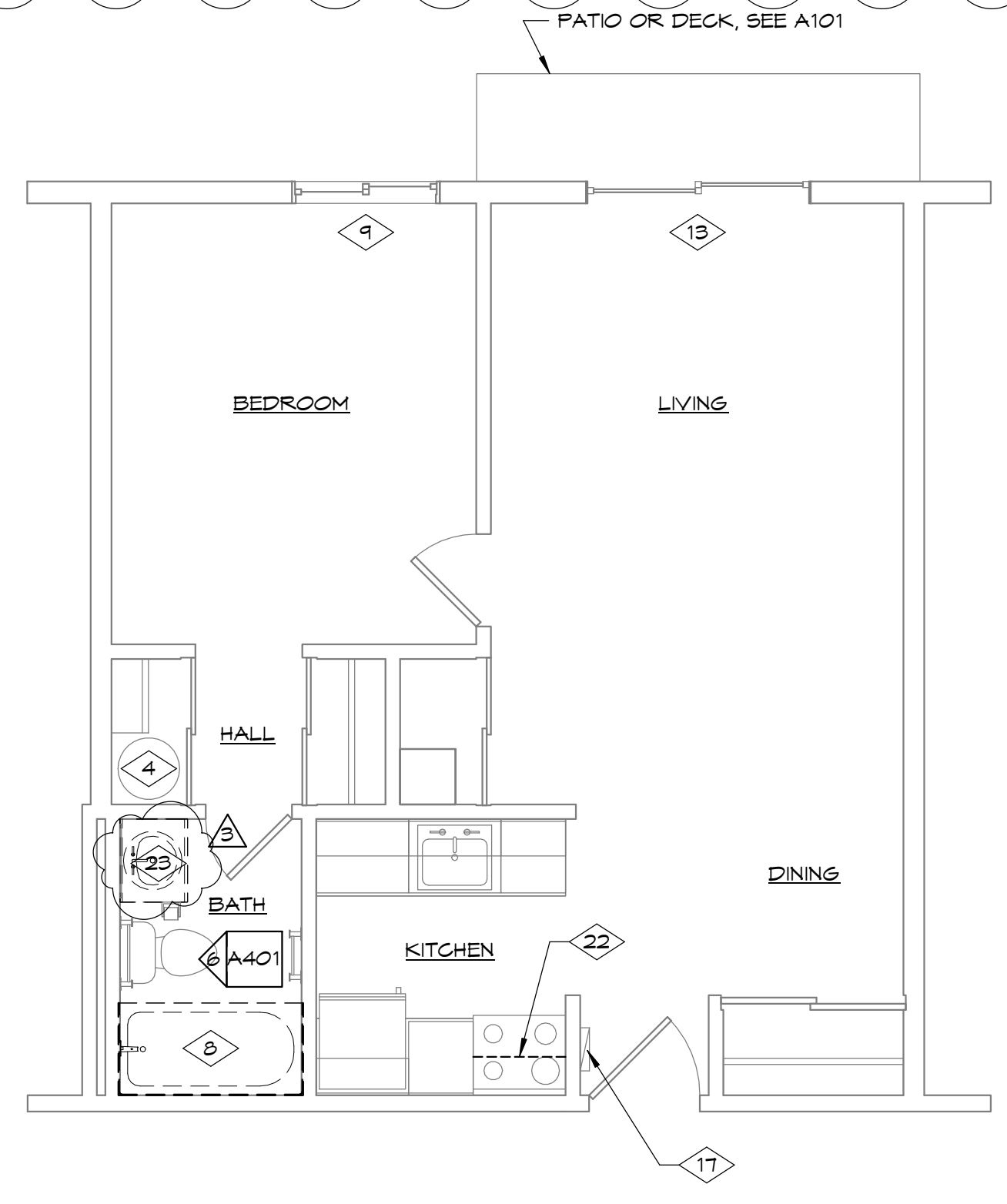


5 BATH
1/4" = 1'-0"

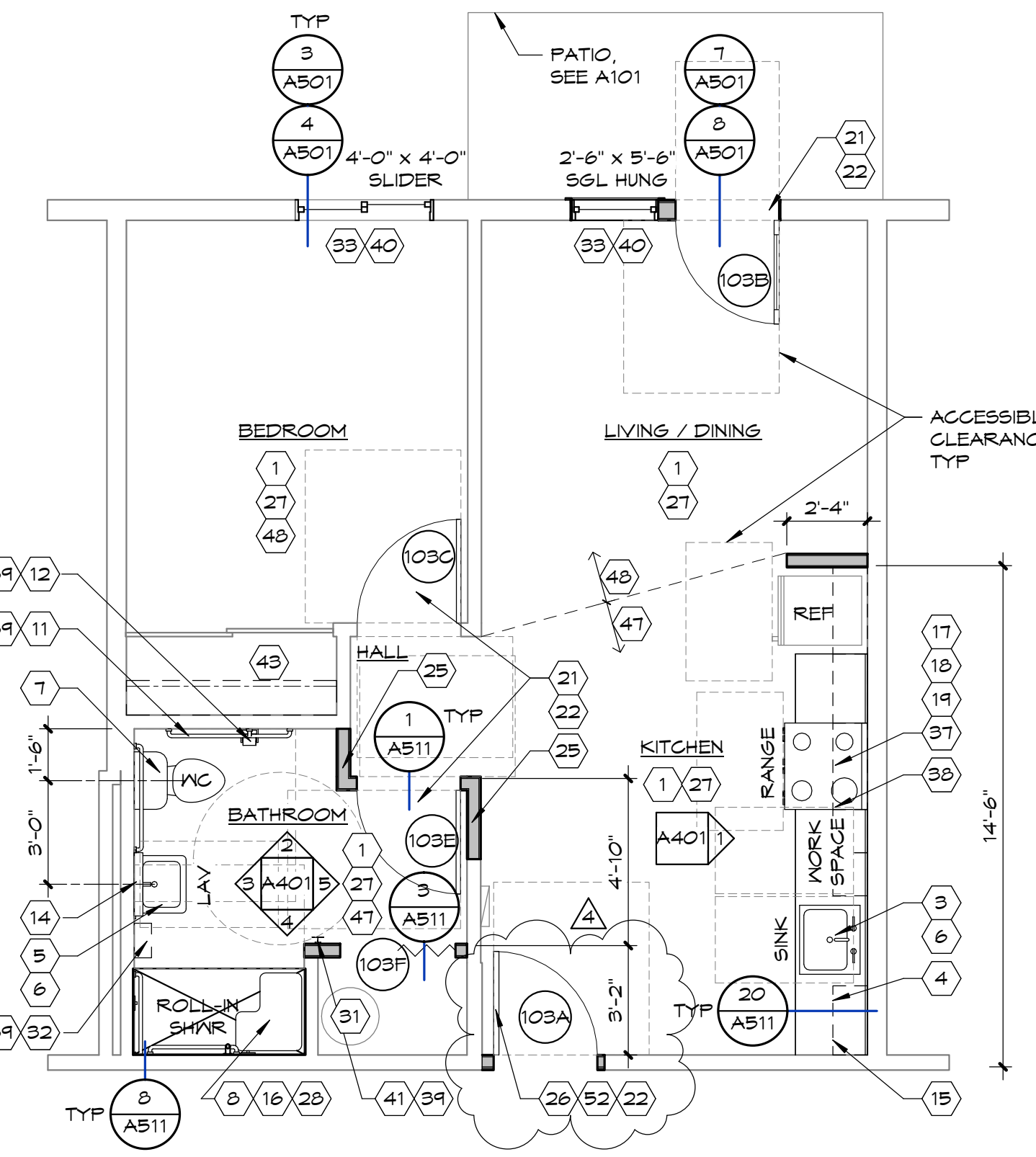
6 TYP 1BR BATH
1/4" = 1'-0"



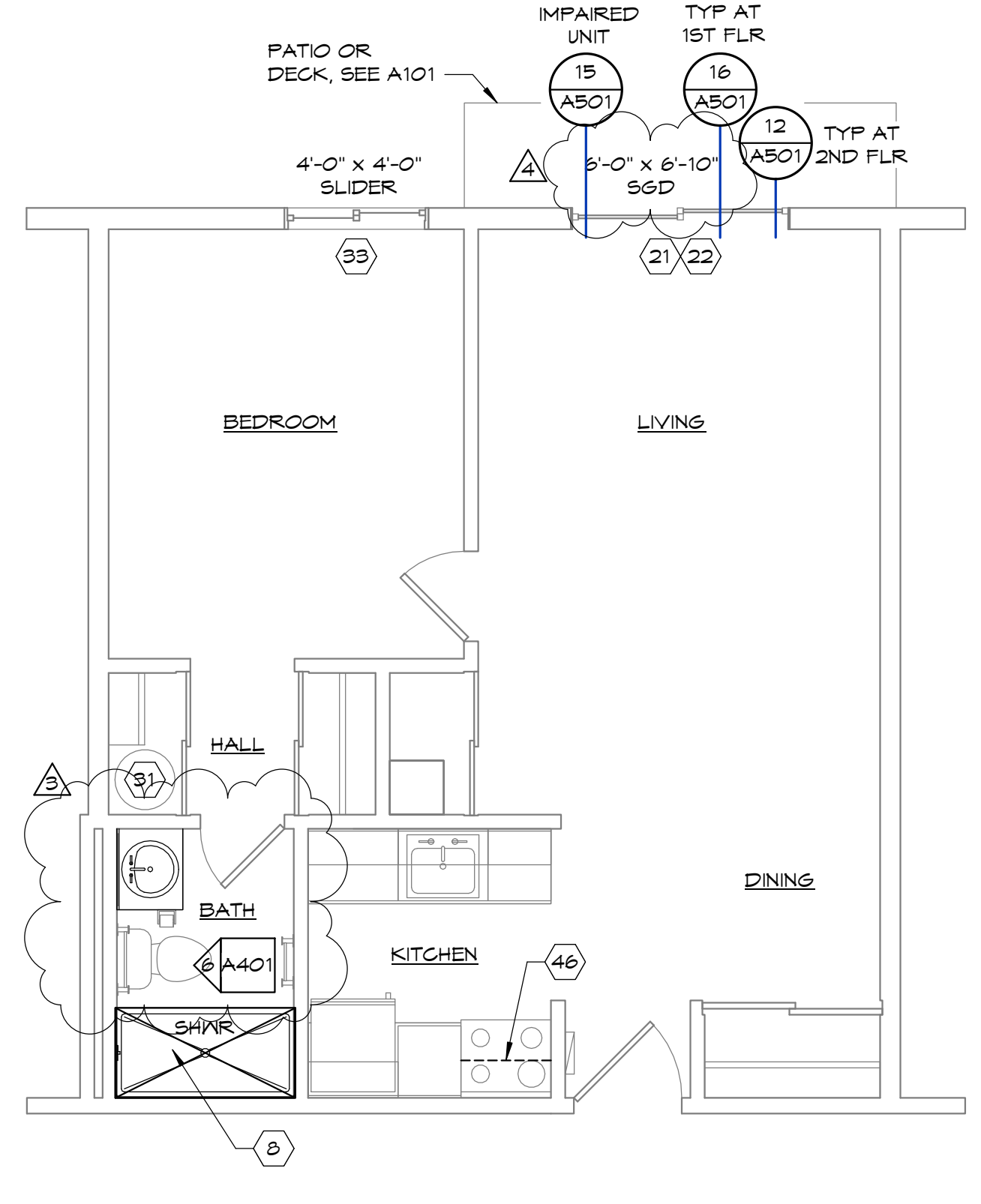
C ACCESSIBLE ONE-BDRM UNIT - DEMO PLAN
1/4" = 1'-0"



A TYPICAL ONE-BEDROOM UNIT - DEMO PLAN
1/4" = 1'-0" (HEARING-IMPAIRED UNIT SIM)



D ACCESSIBLE ONE-BEDROOM UNIT
1/4" = 1'-0"



B TYPICAL ONE-BEDROOM UNIT
1/4" = 1'-0" (HEARING-IMPAIRED UNIT SIM)

3/24/2021 1:28:59 PM C:\Revit_Temp\2021\Pacific Place_Sarah.rvt

NO.	DATE	BY
4	3/24/21	SEMB
3	3/22/21	SEMB
2	3/5/21	PD
1	3/4/21	RJB

ONE-BEDROOM UNITS

PACIFIC PLACE

SOUTH BEND, WASHINGTON

JOINT PACIFIC COUNTY HOUSING AUTHORITY

REGISTERED ARCHITECT

MARK S. KING

STATE OF WASHINGTON

3/24/21

PROJECT NO. 2039

DRAWN: RFP

CHECKED: SEMB

DATE: 01/24/2021

DRAWING NO.

A401

C:\Revit_Temp\2021\Pacific Place_sarah.rvt 3/24/2021 1:30:06 PM

COMMON AREA ROOM FINISH SCHEDULE

ROOM #	ROOM NAME	FLR	BASE	WALL				CLNG	NOTES
				NORTHEAST	SOUTHEAST	SOUTHWEST	NORTHWEST		
120	COMMUNITY ROOM	LVP	WD	PNT-1	PNT-1	PNT-1	PNT-1	-	
121	LAUNDRY	LVP	RB	-	-	-	-	-	
122	RESTROOM	-	-	-	-	-	-	-	
123	ACCESSIBLE RESTROOM	SV	RB	PNT-1	PNT-1	PNT-1/PLAM-2*	PNT-1/PLAM-2*	PNT-1	*SEE INTERIOR ELEVATIONS
124	HALL	LVP	WD	-	-	-	-	-	
125	STAIRS #2	-	-	-	-	-	-	-	
126	STORAGE	-	-	-	-	-	-	-	
127	CORRIDOR	EM/LVP**	WD	-	-	-	-	-	**SEE A101
128	LOBBY	LVP	RB	-	-	-	-	-	
129	VEST	EM	RB	-	-	-	-	-	
130	OFFICE	LVP	WD	PNT-1	PNT-1	PNT-1	PNT-1	PNT-1	
131	ELEC / ELEV EQUIPMENT	-	-	-	-	-	-	-	
132	TENANT STORAGE	-	-	-	-	-	-	-	
132A	MAINT	-	RB	PNT-1	PNT-1	PNT-1	PNT-1	PNT-1	
133	TENANT STORAGE	-	-	-	-	-	-	-	
134	STAIRS #1	-	-	-	-	-	-	-	
220	CORRIDOR	LVP	WD	-	-	-	-	-	
221	LIBRARY	-	-	-	-	-	-	-	

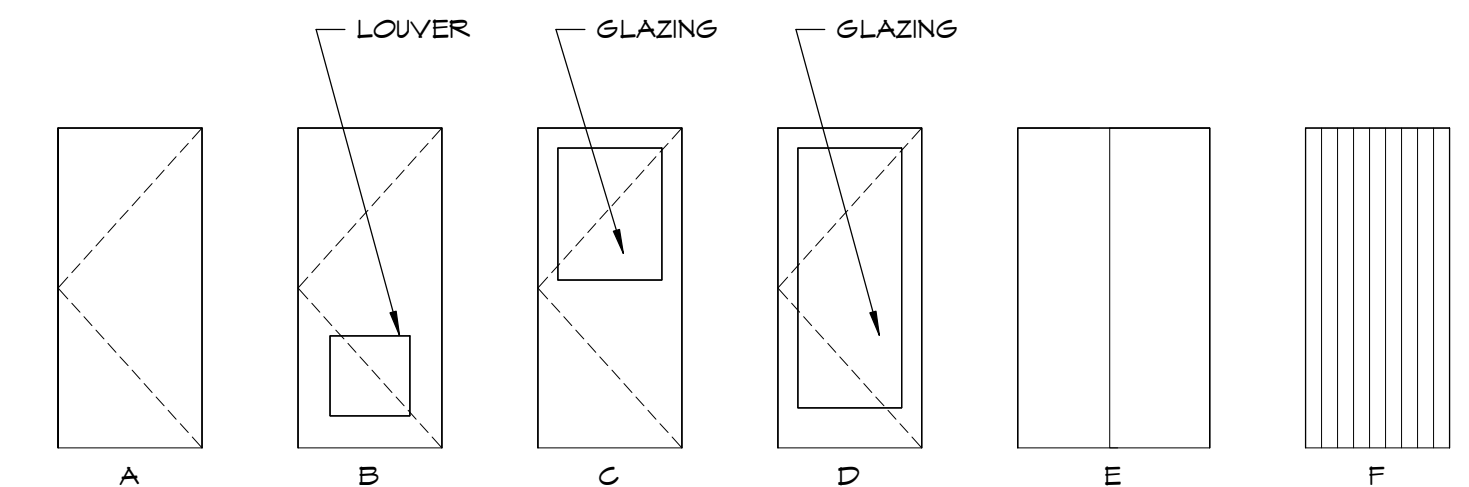
FINISH LEGEND

ITEM CODE	PRODUCT/COLOR NAME & NUMBER	NOTES
09650 RESILIENT FLOORING & BASE		
LVP-1	TAS FLOORING; ODYSSEY EIR, BALBOA NOLV0201	COMMON AREA LUXURY VINYL PLANK
LVP-2	TAS FLOORING; EXPEDITION, MAGELLAN IMLV0306	UNIT LUXURY VINYL PLANK
RB-1	TARKETT; TRADITIONAL 4" WALL BASE, 283 TOAST	RUBBER BASE (THROUGHOUT)
SV-1	ARMSTRONG; DECORART ABODE, 80822 ROUGH LINEN, ALMOND GRAY	RESTROOM & UNIT BATH SHEET VINYL
09680 CARPET		
EM-1	SHAW CONTRACT; PATH TILE 5T034, PORTABELLA 34T61	ENTRY MAT
09900 PAINTING		
PNT-1	SHERWIN WILLIAMS; SW7103 WHITETAIL	GENERAL PAINT
PNT-2	SHERWIN WILLIAMS; TBD	EXTERIOR FIELD PAINT
PNT-3	SHERWIN WILLIAMS; TBD	EXTERIOR TRIM PAINT
11950 CABINETS & COUNTERTOPS		
CAB-1	SMART CABINETS; BRIGHTON DOOR; MAPLE SLATE	CABINETS (THROUGHOUT)
PLAM-1	WILSONART; SILVER TRAVERTINE 1858	LAMINATE COUNTERTOPS (THROUGHOUT)
PLAM-2	WILSONART; VAPOR STRANDZ 4939	RESTROOM MAINSCOT

UNIT MATRIX

UNIT #	UNIT TYPE	REPLACE LIGHT FIXTURES	REPLACE BASEBOARD HEATERS WITH COVE HEATERS	REPLACE WATER HEATER	REPLACE TUB w/ WALK-IN SHOWER	REPLACE WINDOW TREATMENTS	REPLACE RANGE HOODS	REPLACE VANITY
101	1 BR HEAR	Y	Y	Y	-	Y	Y	Y
102	1 BR	Y	Y	Y	Y	Y	Y	Y
103	1 BR ACC	Y*	Y*	Y*	Y*	Y	Y	PER A401
104	2 BR ACC	Y*	Y*	Y*	Y*	Y	Y	PER A402
105	1 BR	Y	Y	Y	Y	Y	Y	Y
106	1 BR	Y	Y	Y	Y	Y	Y	Y
107	1 BR	Y	Y	Y	Y	Y	Y	Y
108	1 BR	Y	Y	Y	Y	Y	Y	Y
109	1 BR	Y	Y	Y	Y	Y	Y	Y
110	1 BR	Y	Y	Y	Y	Y	Y	Y
111	1 BR	Y	Y	Y	Y	Y	Y	Y
112	1 BR	Y	Y	Y	Y	Y	Y	Y
201	1 BR	-	-	Y	Y	Y	Y	Y
202	1 BR	-	-	Y	Y	Y	Y	Y
203	1 BR	-	-	Y	Y	Y	Y	Y
204	1 BR	-	-	Y	Y	Y	Y	Y
205	1 BR	-	-	Y	Y	Y	Y	Y
206	1 BR	-	-	Y	Y	Y	Y	Y
207	1 BR	-	-	Y	Y	Y	Y	Y
208	1 BR	-	-	Y	Y	Y	Y	Y
209	1 BR	-	-	Y	Y	Y	Y	Y
210	1 BR	-	-	Y	Y	Y	Y	Y
211	1 BR	-	-	Y	Y	Y	Y	Y
212	1 BR	-	-	Y	Y	Y	Y	Y

UNIT MATRIX LEGEND
 - NO WORK
 Y YES (REPLACE / PROVIDE NEW)
 * ACCESSIBLE UNIT, WORK SHALL NOT BE REMOVED BY BID ALTERNATES

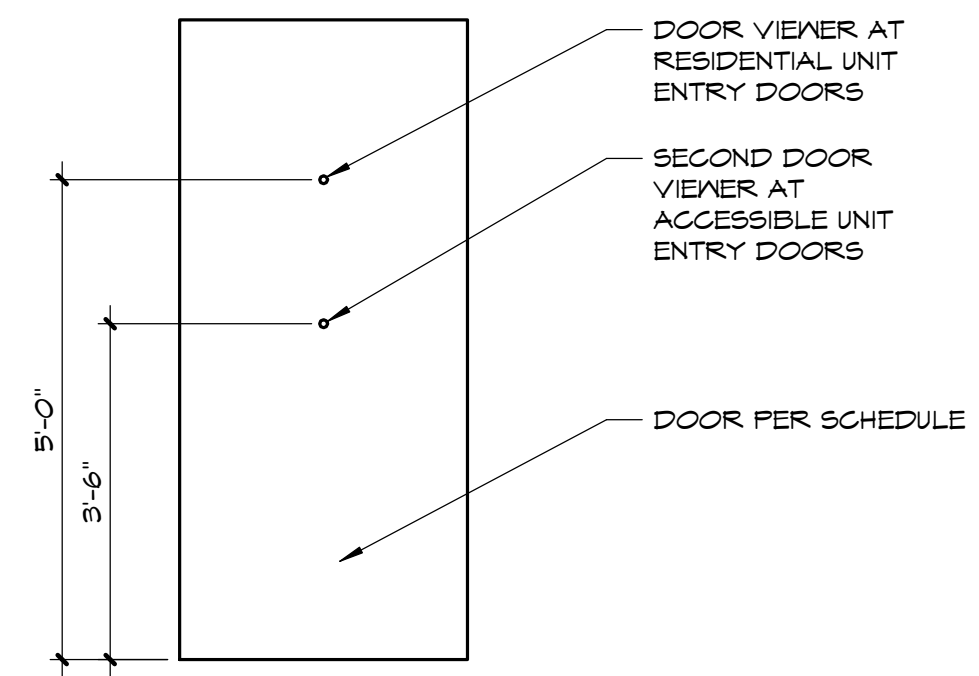


DOOR LEGEND
N.T.S.

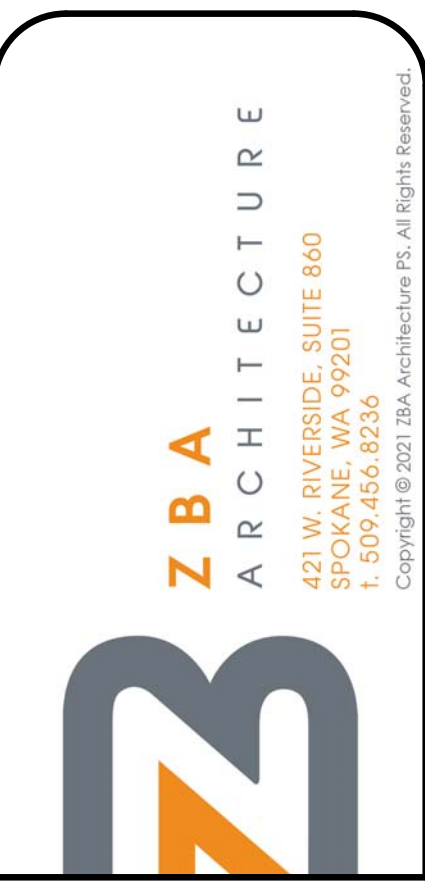
DOOR SCHEDULE - COMMON AREAS

MARK	DIMENSIONS			DOOR				FRAME		HWN GROUP	FIRE RATING	NOTES
	W	HT	THK	TYPE	MATL	FIN	GLAZ	MATL	FIN			
103A	3'-0"	6'-8"	1 3/4"	A	SCND	N		HM	PNT	5	20 MIN	
103B	3'-0"	6'-8"	1 3/4"	C	FG	PNT	IGU	WD	PNT	6	N	
103C	3'-0"	6'-8"	1 3/8"	A	SCND	PNT	N	WD	PNT	8	N	
103E	3'-0"	6'-8"	1 3/8"	A	SCND	PNT	N	WD	PNT	8	N	
103F	3'-4"	6'-8"	1"	F	CP	FF	N	GYP	PNT	11	N	
104A	3'-0"	6'-8"	1 3/4"	A	SCND	PNT	N	HM	PNT	4	20 MIN	
104B	3'-0"	6'-8"	1 3/4"	C	FG	PNT	IGU	WD	PNT	1	N	
104C	6'-0"	6'-8"	1 3/8"	E	WD	PNT	N	WD	PNT	10	N	
104D	3'-0"	6'-8"	1 3/8"	A	SCND	PNT	N	WD	PNT	9	N	
104E	3'-0"	6'-8"	1 3/8"	A	SCND	PNT	N	WD	PNT	9	N	
104F	3'-0"	6'-8"	1 3/8"	A	SCND	PNT	N	WD	PNT	8	N	
104G	4'-0"	6'-8"	1 3/8"	E	WD	PNT	N	WD	PNT	10	N	
104H	3'-0"	6'-8"	1 3/8"	A	SCND	PNT	N	WD	PNT	8	N	
104J	3'-4"	6'-8"	1"	F	CP	FF	N	GYP	PNT	11	N	
120	3'-0"	6'-8"	1 3/4"	A	-	-	N	-	-	6	20 MIN	PROVIDE NEW CLOSER/MAG HOLDOPEN
123	3'-0"	6'-8"	1 3/4"	A	SCND	PNT	N	HM	PNT	7	20 MIN	
127B	3'-0"	6'-8"	1 3/4"	D	FG	PNT	IGU	WD	PNT	2	N	
131	3'-0"	6'-8"	1 3/4"	B	HM	PNT	N	-	-	3	N	20"x20" LOUVER

DOOR SCHEDULE LEGEND
 - EXIST TO REMAIN
 CP COMPOSITE
 FF FACTORY FINISH
 FG FIBERGLASS, INSULATED
 HM HOLLOW METAL
 IGU INSULATED GLAZING UNIT
 N NONE
 PNT PAINT
 WD WOOD, HOLLOW CORE
 SCND WOOD, SOLID CORE



4 DOOR VIEWER
1/2" = 1'-0"



NO.	DATE	BY
4	3/24/21	SEMB
3	3/22/21	SEMB

NO.	DATE	BY

SCHEDULES

PACIFIC PLACE
SOUTH BEND, WASHINGTON
JOINT PACIFIC COUNTY HOUSING AUTHORITY

9011 REGISTERED ARCHITECT
 MARK S. KING
 STATE OF WASHINGTON
 3/24/21

PROJECT NO. 2039
 DRAWN: RJB
 CHECKED: SEMB
 DATE: 01/29/2021
 DRAWING NO.

A601